

SHEEP BRAIN
SAGITTAL SECTION

PLATE 01

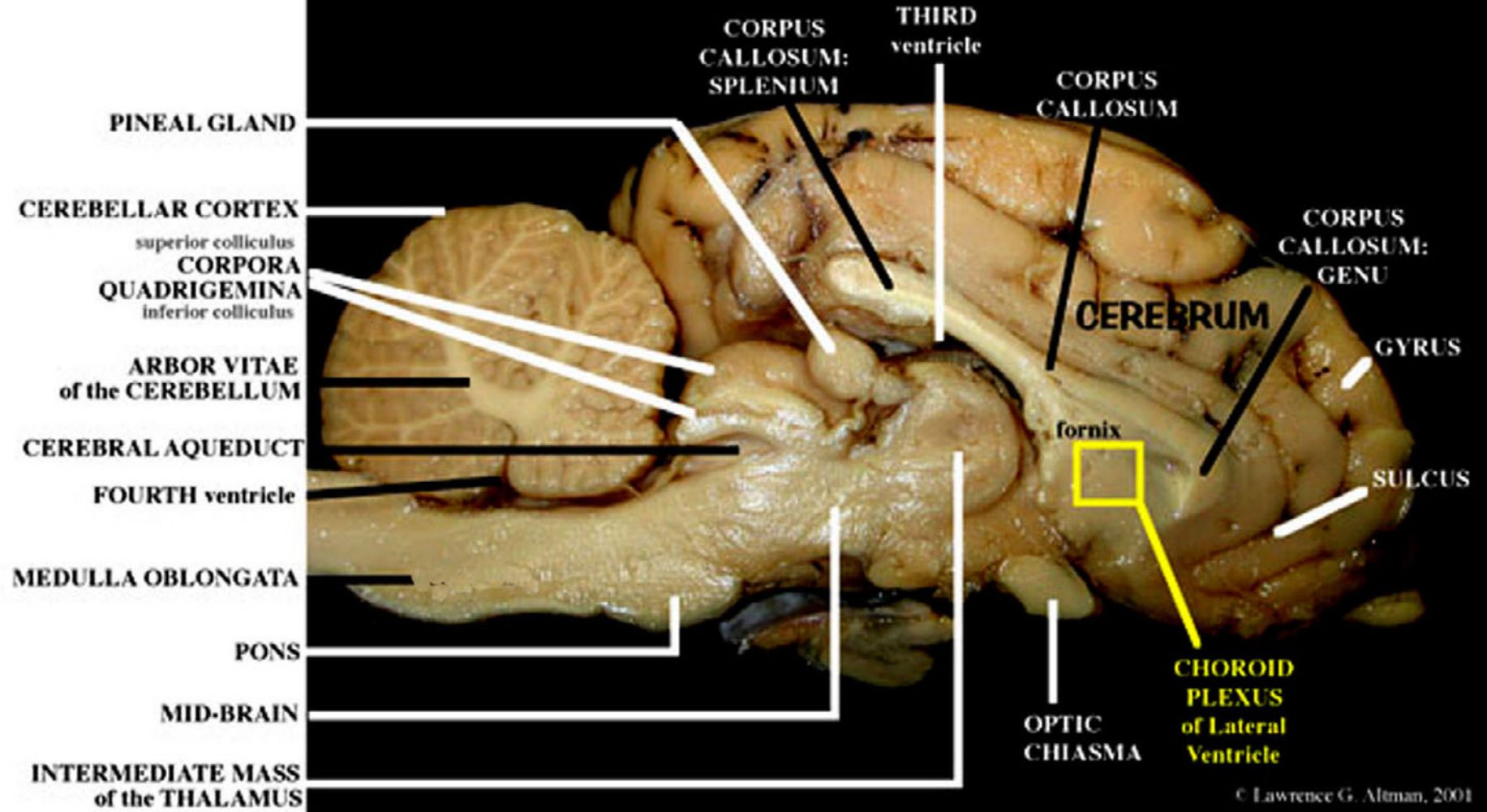
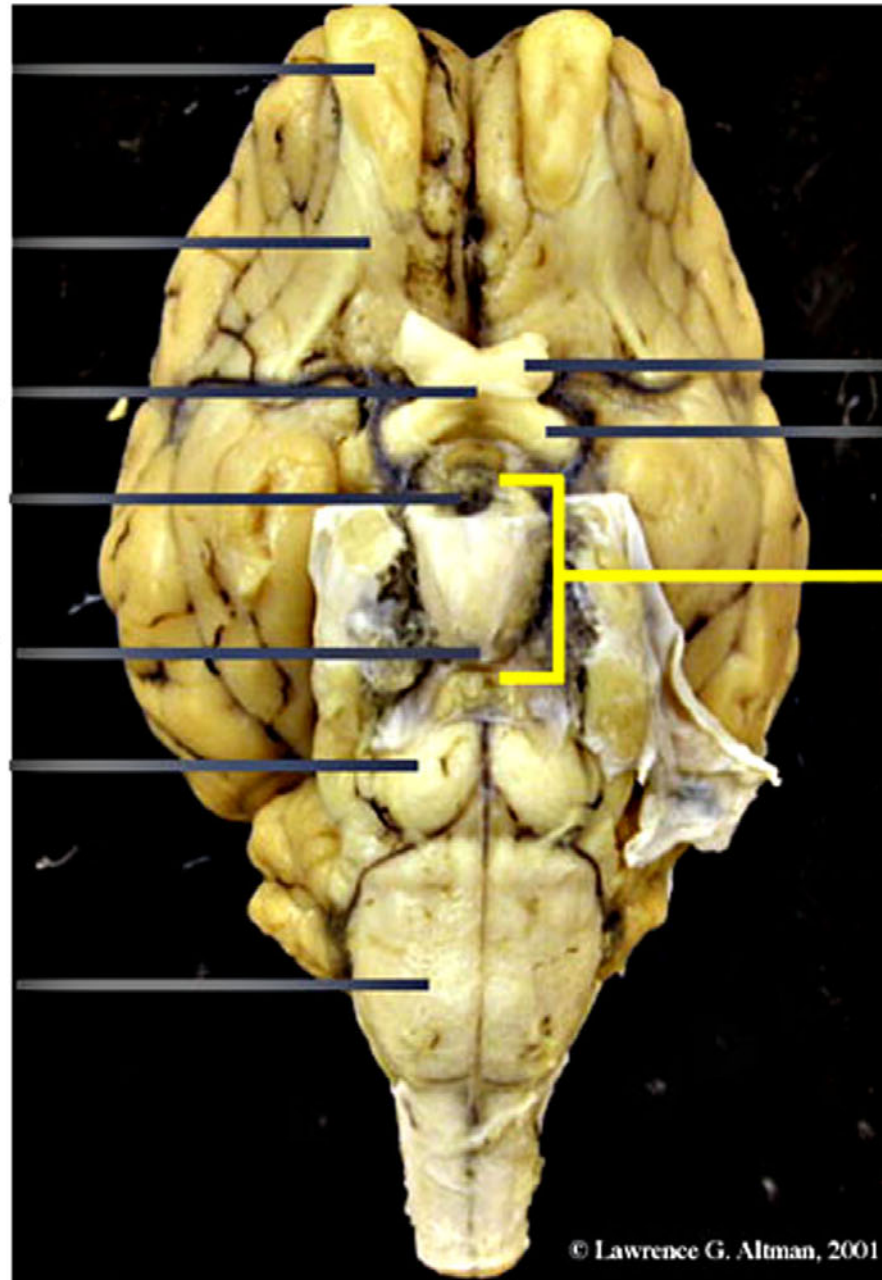


PLATE 02

- A. OLFACTORY BULB
- B. OLFACTORY TRACT
- C. OPTIC CHIASMA
- D. INFUNDIBULUM
- E. MAMILLARY BODY
- F. PONS
- G. MEDULLA OBLONGATA



- H. OPTIC NERVE
- I. OPTIC TRACT
- J. HYPOTHALAMUS

SHEEP BRAIN
VENTRAL VIEW