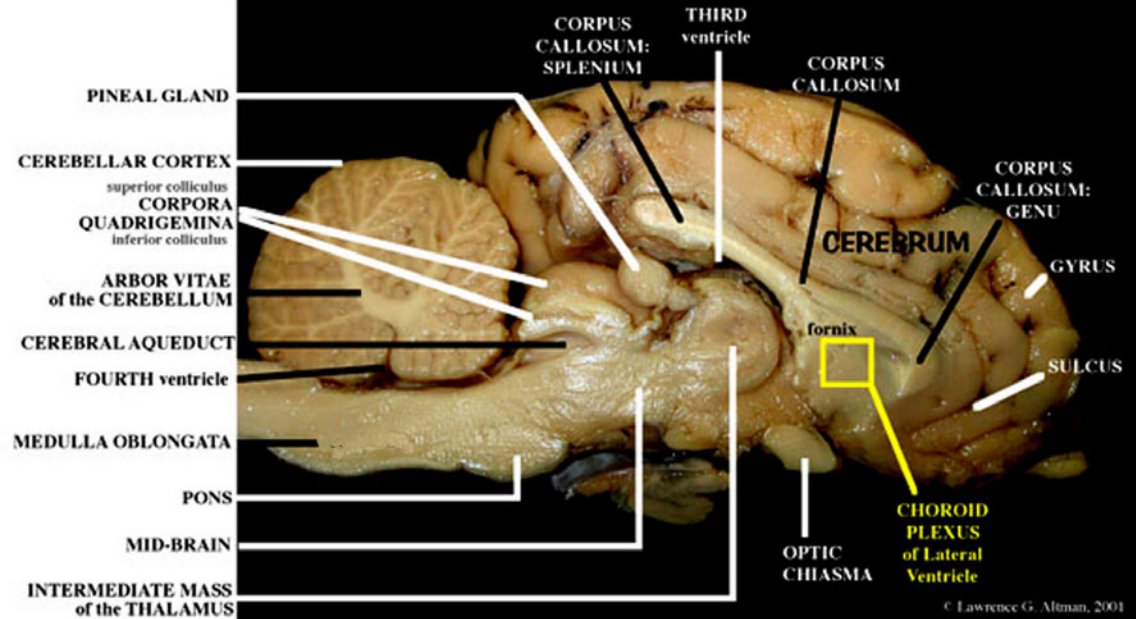


SHEEP BRAIN
SAGITTAL SECTION

PLATE 01



- A. OLFACTORY BULB
- B. OLFACTORY TRACT
- C. OPTIC CHIASMA
- D. INFUNDIBULUM
- E. MAMILLARY BODY
- F. PONS
- G. MEDULLA OBLONGATA

PLATE 02



SHEEP BRAIN
VENTRAL VIEW