

BIO 211:
ANATOMY & PHYSIOLOGY I

1



STRONGLY SUGGESTED
Have the Morton - Perry Atlas
open while viewing these plates !!!

Helpful **SELF-TESTS** listed on the last slide.

Module 3 of 5

BONE LABS:

**- VERTEBRAE -
- THORACIC CAGE -**

Dr. Lawrence G. Altman
www.lawrencegaltman.com
Some illustrations are courtesy of McGraw-Hill.

● = Required
○ = Not Required

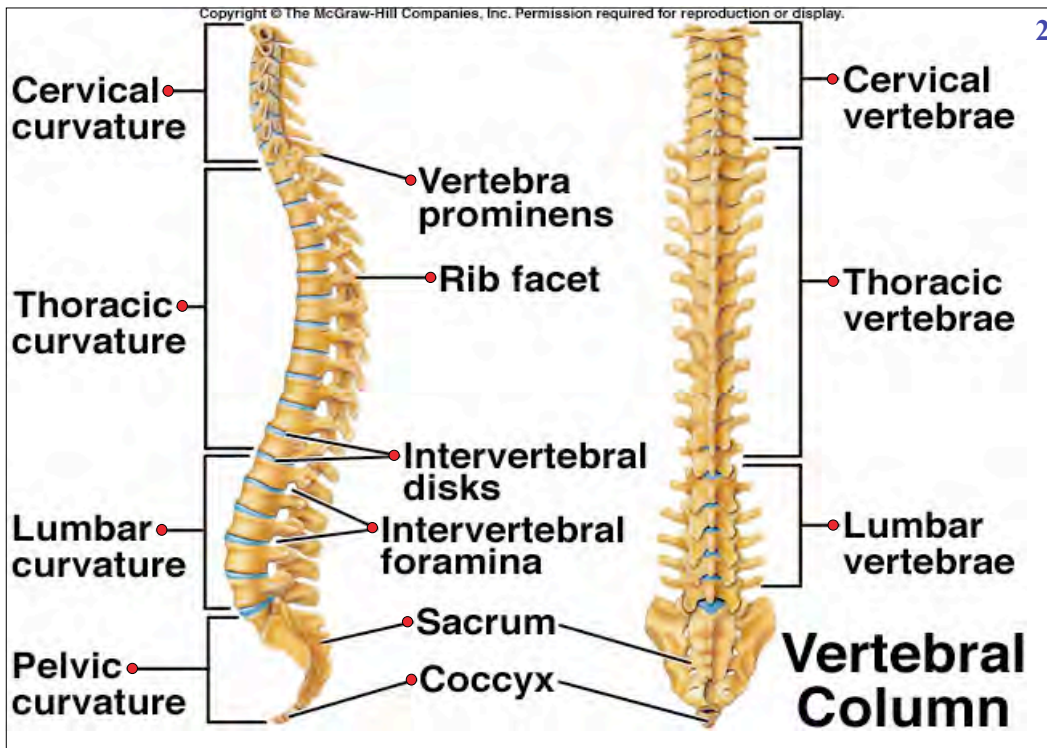


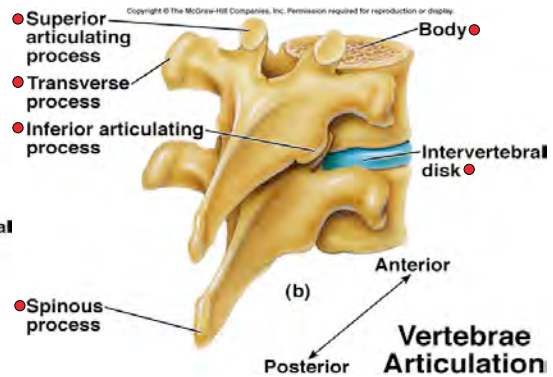
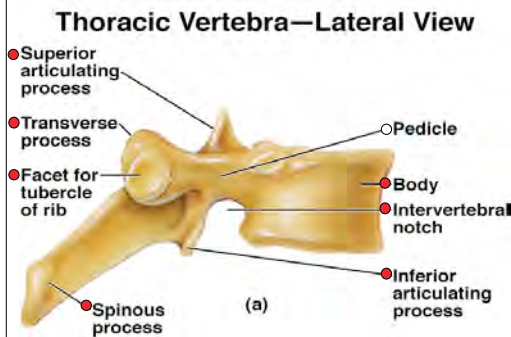
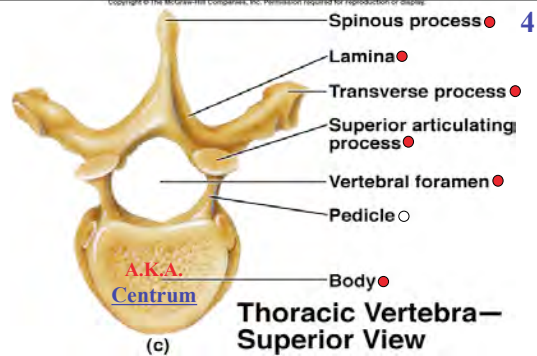
Table 7.9 **Bones of Vertebral Column**

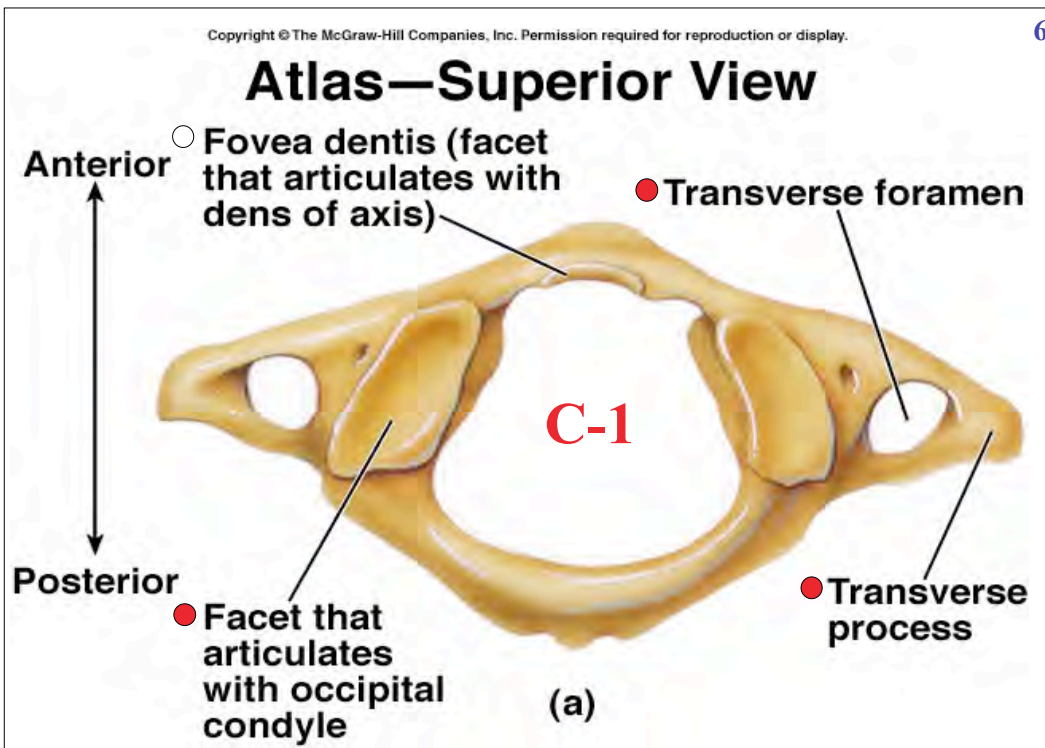
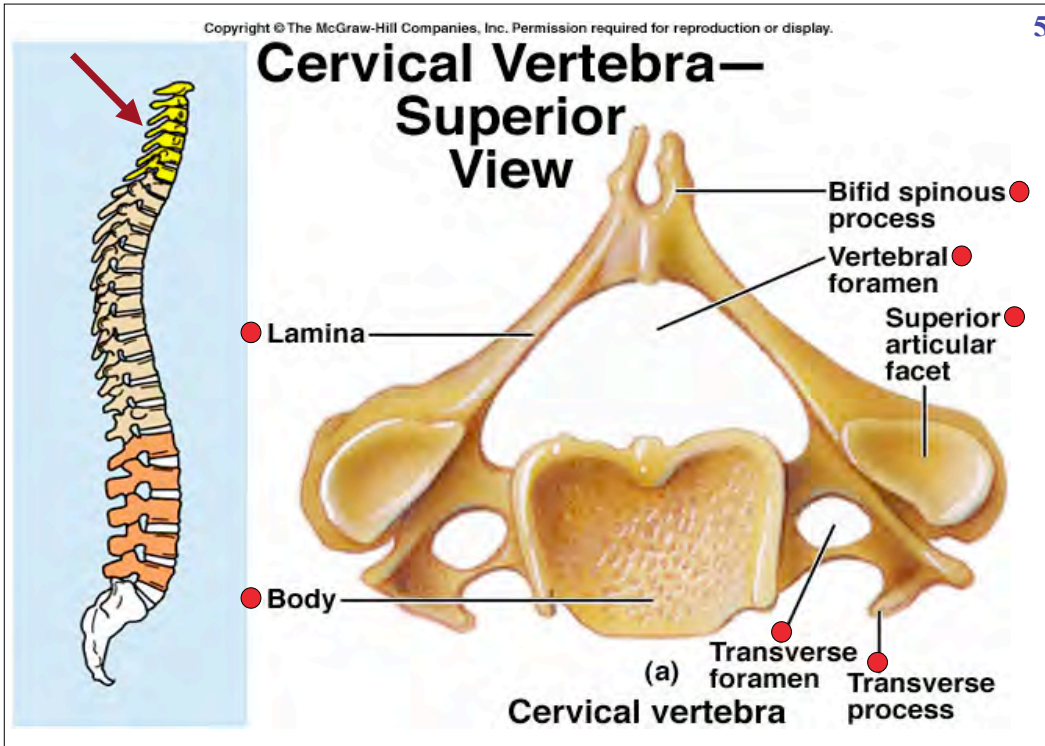
Bones	Number	Special Features	Bones	Number	Special Features
Cervical • vertebrae	7	Transverse foramina; facets of atlas articulate with occipital condyles of skull; dens of axis articulates with atlas; spinous processes of second through fifth vertebrae are bifid	Lumbar • vertebrae	5	Large bodies; transverse processes that project posteriorly at sharp angles; short, thick spinous processes directed nearly horizontally
Thoracic • vertebrae	12	Pointed spinous processes that slope downward; facets that articulate with ribs	Sacrum •	5 vertebrae fused into 1 bone	Dorsal sacral foramina, auricular surfaces, sacral promontory, sacral canal, sacral foramina
			Coccyx •	4 vertebrae fused into 1 bone	Attached by ligaments to the margins of the sacral hiatus

Use this Plate as a starting point to learn the *generalized* features of vertebrae.

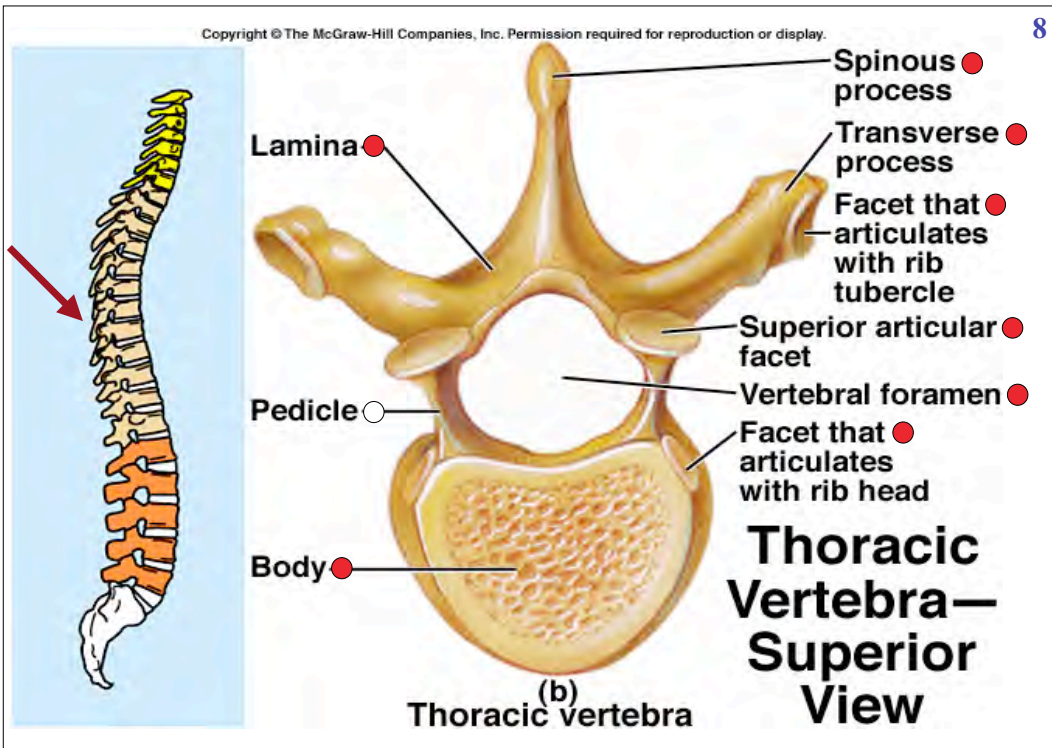
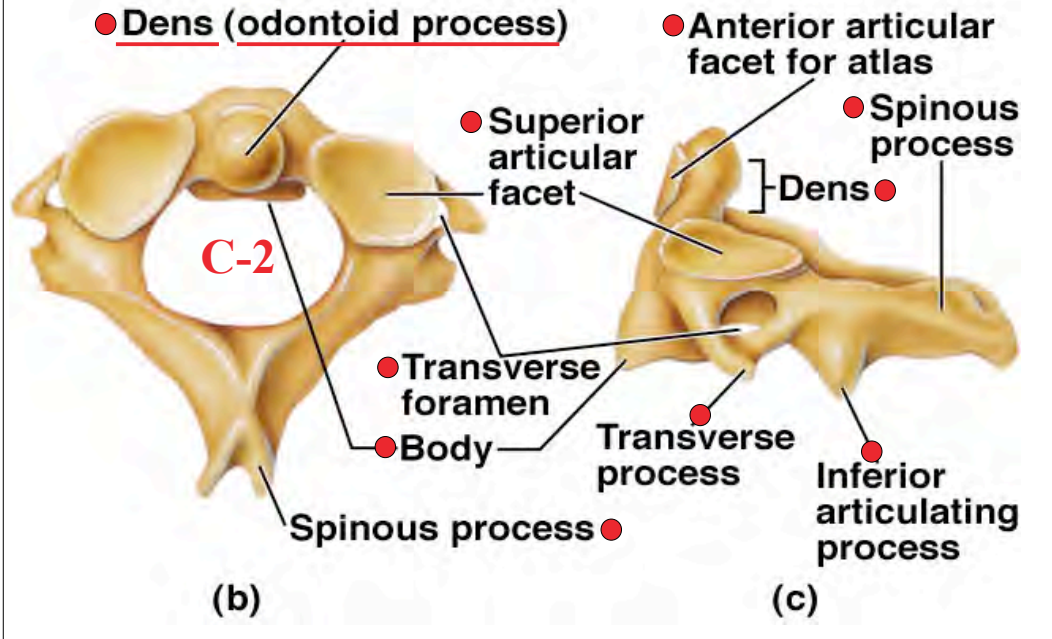
Start on the right >>>>>

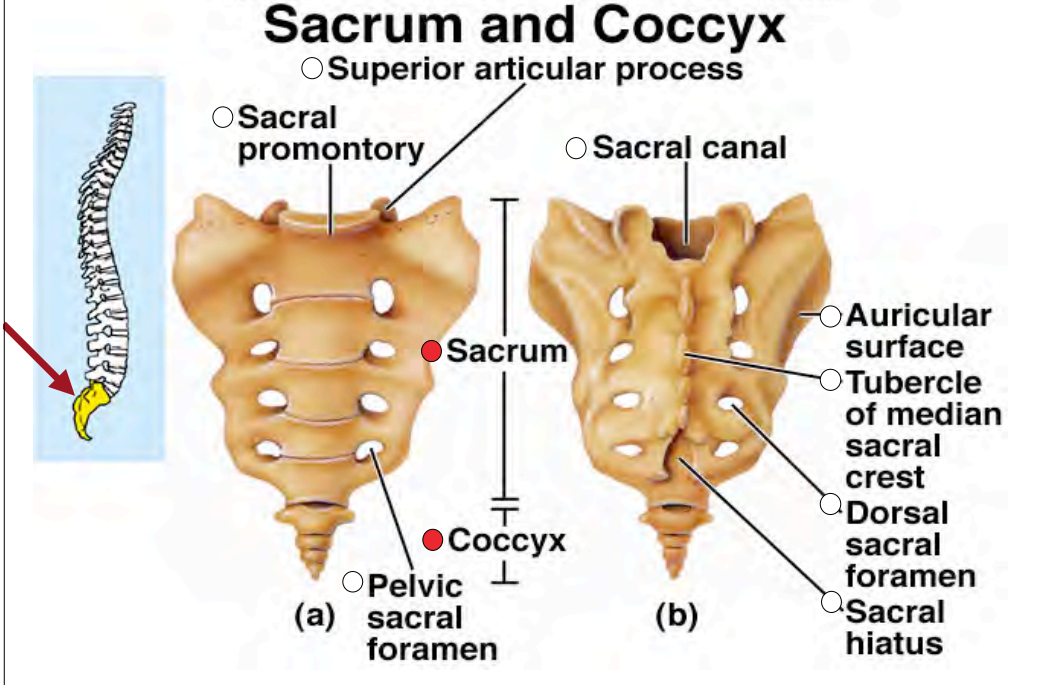
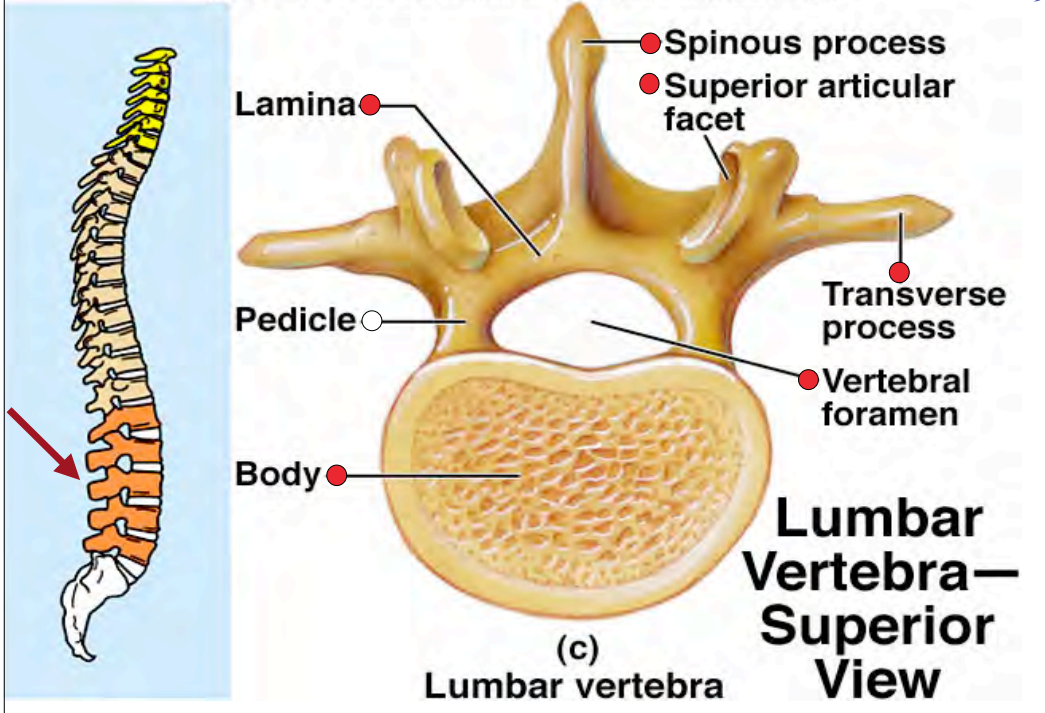
Suggested study order: c > a > b

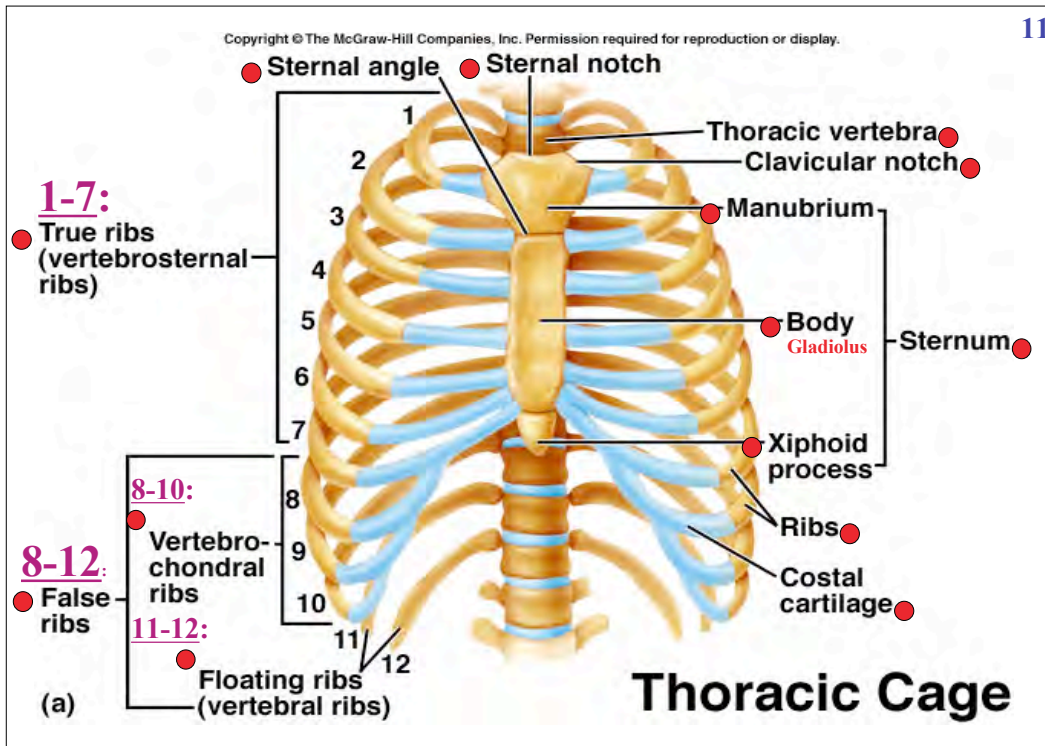




Axis







Ready for a Self - Test ?

Two of my favorite sites:

- Best for the Skull -

<http://www.gwc.maricopa.edu/class/bio201/skull/skulltt.htm>

Best for the Vertebrae and Ribs

<http://www.gwc.maricopa.edu/class/bio201/vert/vertut.htm>

-Don't forget to scroll down.

Last Plate