

BIO 211: ANATOMY & PHYSIOLOGY I



STRONGLY SUGGESTED
Have the Morton - Perry Atlas
open while viewing these plates !!!

Helpful **SELF-TESTS** listed on the last slide.

Module 4 of 5

BONE LABS:

- PECTORAL GIRDLE -
- UPPER LIMB -

Dr. Lawrence G. Altman

www.lawrencegaltman.com

Some illustrations are courtesy of McGraw-Hill.

● = Required

○ = Not Required

N Naugatuck
Valley
Community
College

Copyright © The McGraw-Hill Companies, Inc. Permission required for reproduction or display.

Pectoral Girdle

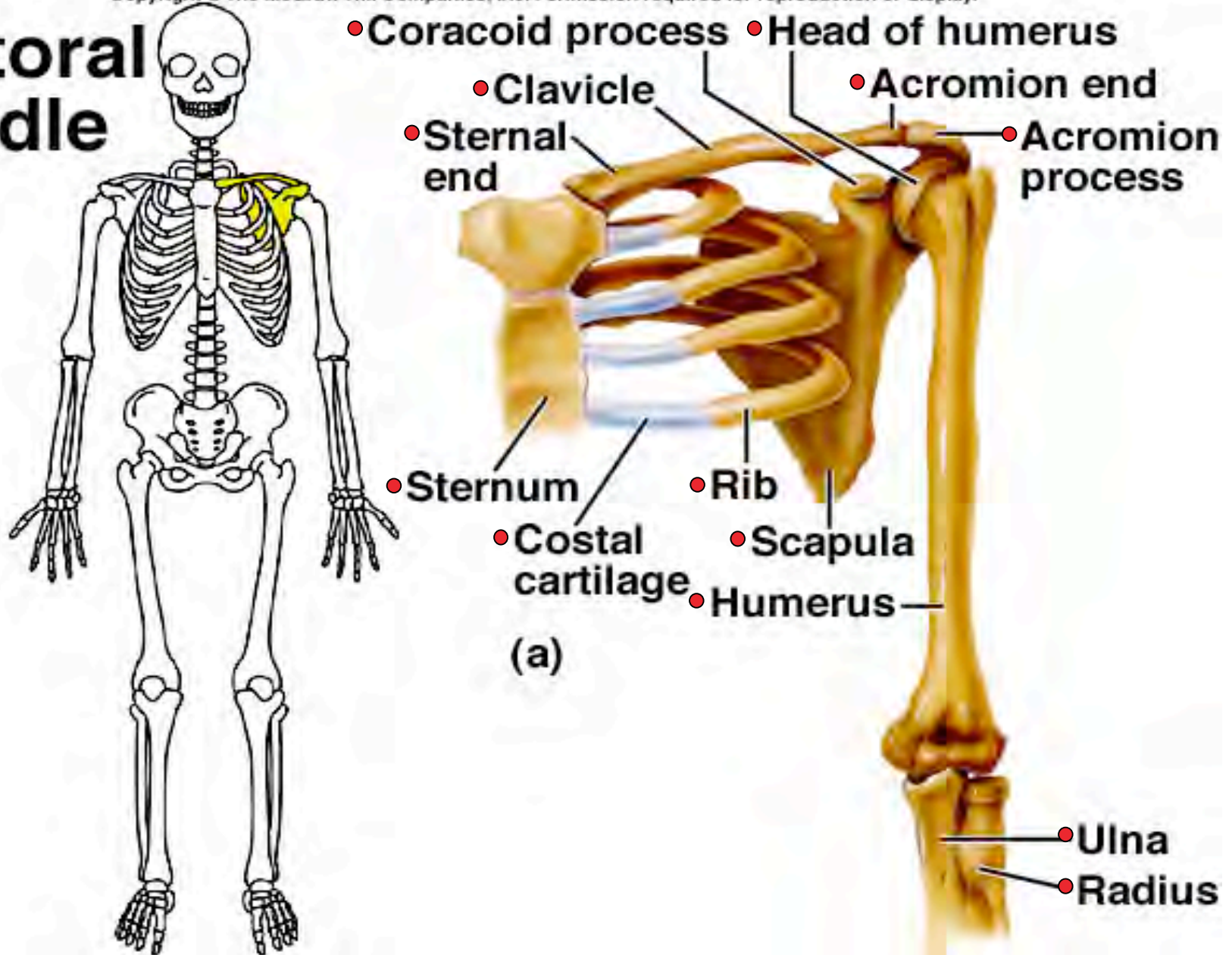
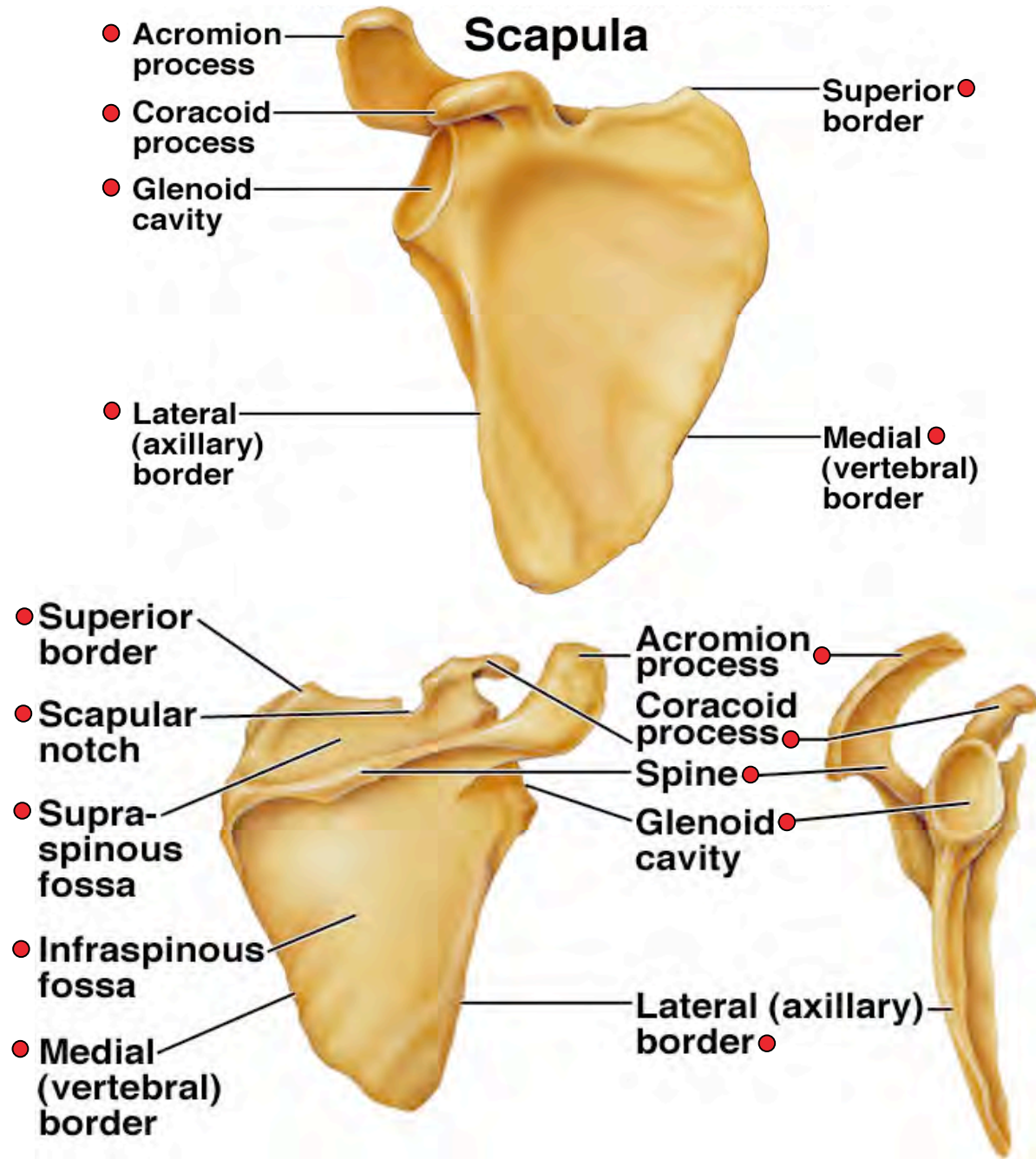
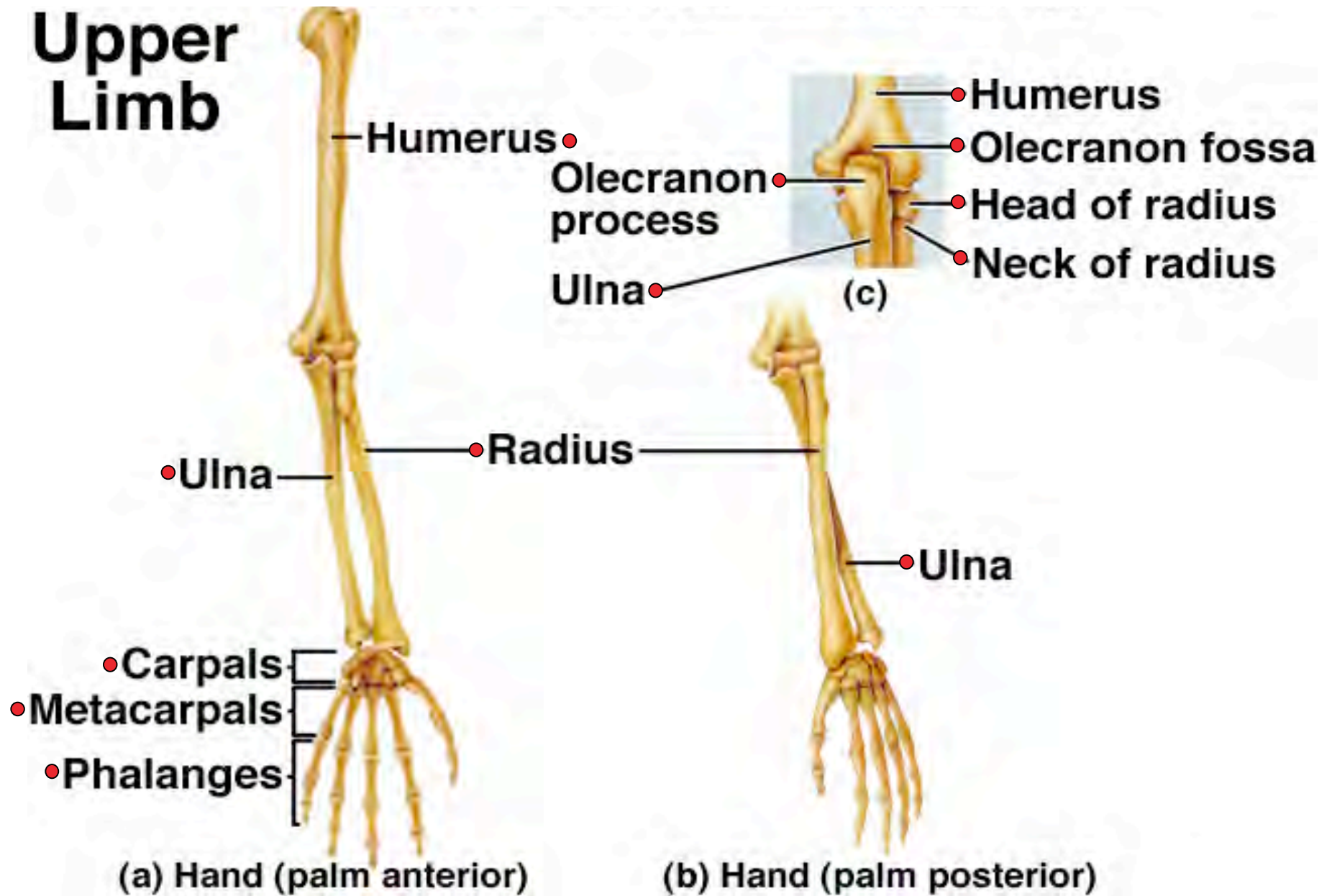


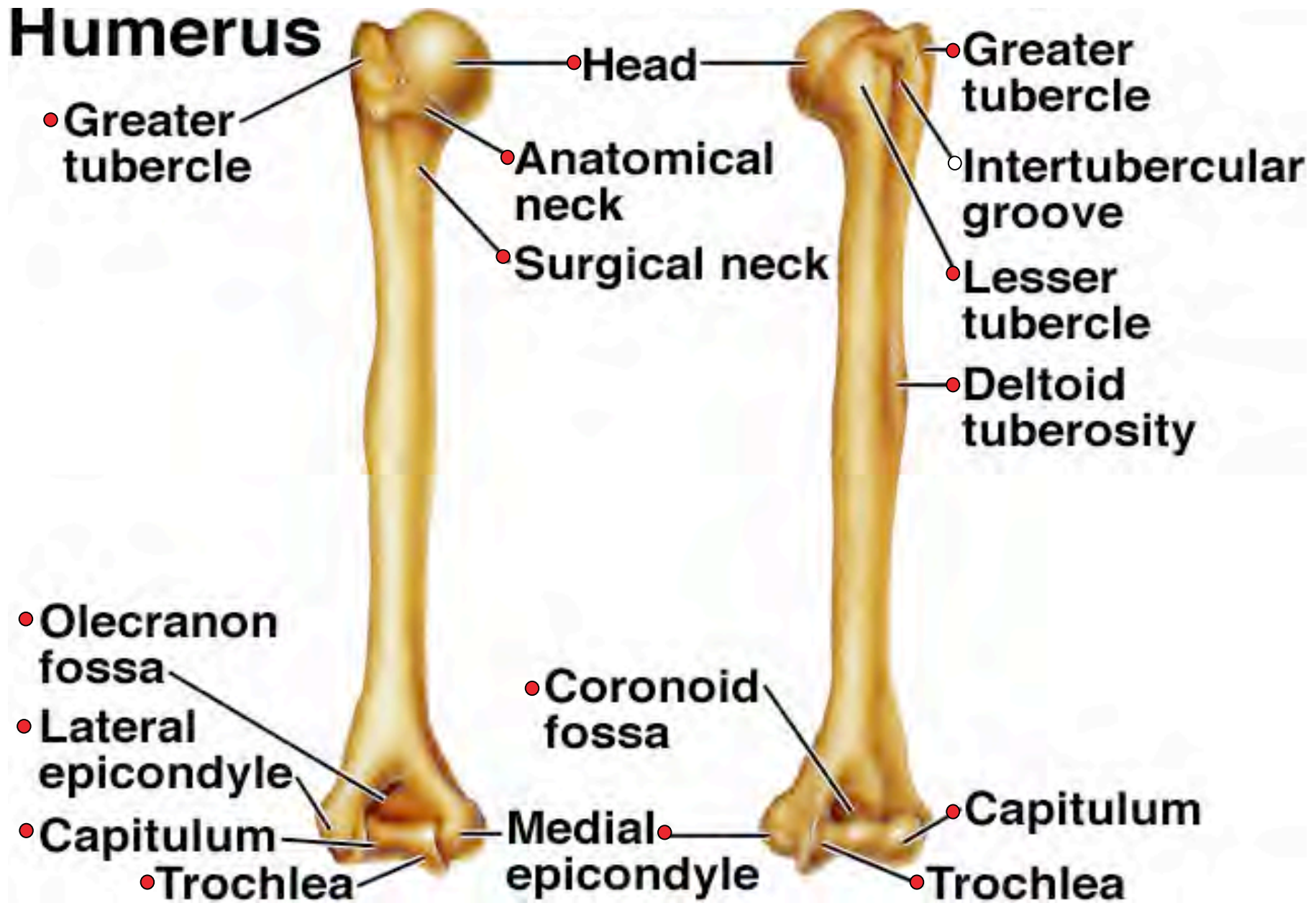
Table 7.10 Bones of Pectoral Girdle and Upper Limbs		
Name and Number	Location	Special Features
Clavicle (2)	<ul style="list-style-type: none"> ● Base of neck between sternum and scapula 	Sternal end, acromial end
Scapula (2)	<ul style="list-style-type: none"> ● Upper back, forming part of shoulder 	Body, spine, head, acromion process, coracoid process, glenoid cavity
Humerus (2)	<ul style="list-style-type: none"> ● Arm, between scapula and elbow 	Head, greater tubercle, lesser tubercle, inter-tubercular groove, surgical neck, deltoid tuberosity, capitulum, trochlea, medial epicondyle, lateral epicondyle, coronoid fossa, olecranon fossa
Radius (2)	<ul style="list-style-type: none"> ● Lateral side of forearm, between elbow and wrist 	Head, radial tuberosity, styloid process, ulnar notch
Ulna (2)	<ul style="list-style-type: none"> ● Medial side of forearm, between elbow and wrist 	Trochlear notch, olecranon process, head, styloid process, radial notch
Carpal (16)	<ul style="list-style-type: none"> ● Wrist 	Arranged in two rows of four bones each
Metacarpal (10)	<ul style="list-style-type: none"> ● Palm 	One in line with each finger
Phalanx (28)	<ul style="list-style-type: none"> ● Finger 	Three in each finger; two in each thumb



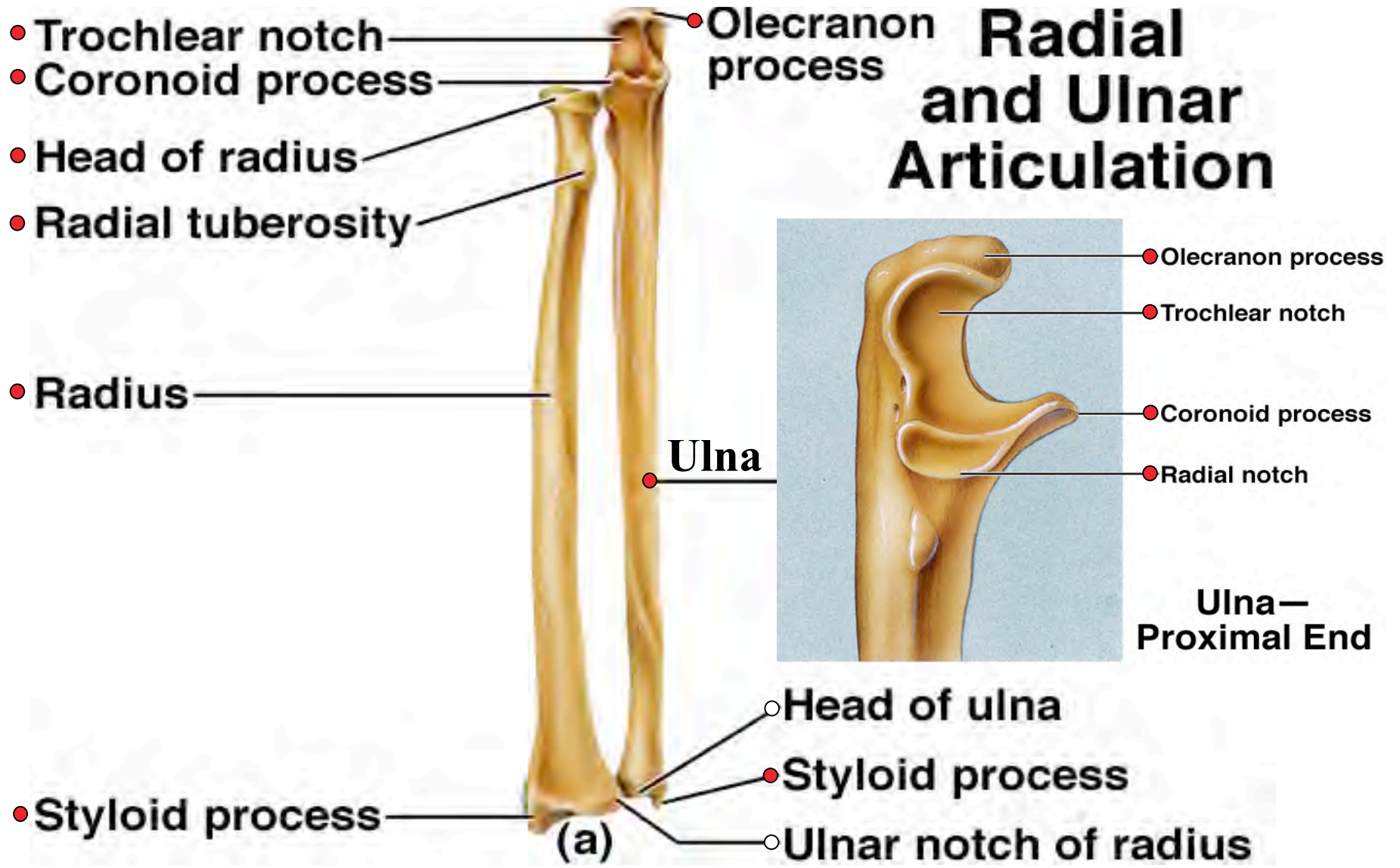
Upper Limb



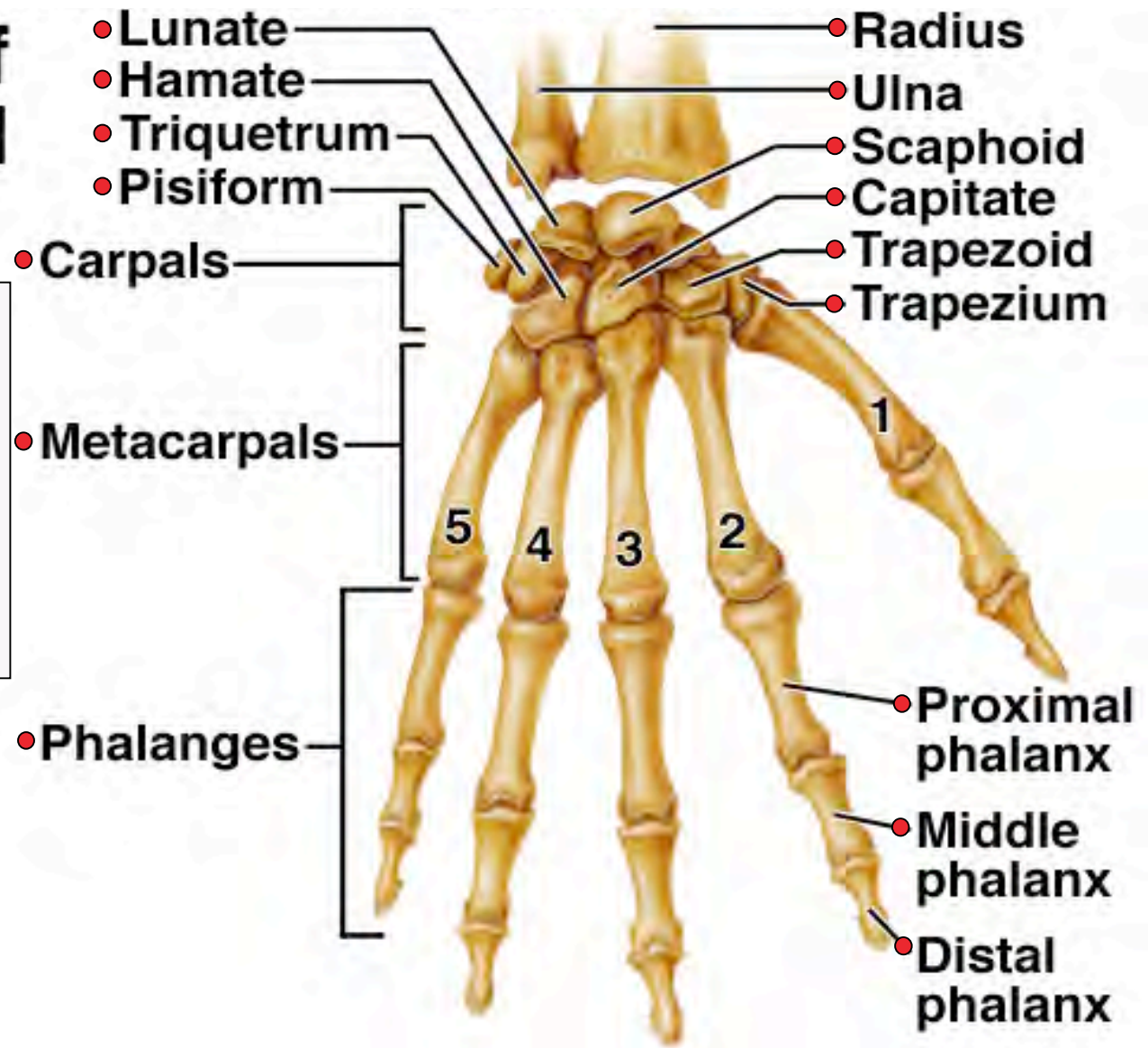
Humerus



Radial and Ulnar Articulation



Bones of the Hand



Ready for a Self - Test ?

Among my favorite sites:

-Best for the Hand -

<http://www.gwc.maricopa.edu/class/bio201/hand/anhand.htm>

-- Best Overall -

<http://www.bio.psu.edu/faculty/strauss/anatomy/skel/skeletal.htm>

Last Plate

BONE LABS:

TOPIC 4 of 5

- PECTORAL GIRDLE -

- UPPER LIMB -