

**BIO 211:**  
**ANATOMY & PHYSIOLOGY I**



***STRONGLY SUGGESTED***  
Have the Morton - Perry Atlas  
open while viewing these plates !!!

Helpful **SELF-TESTS** listed on the last slide.

**Module 4 of 5**

**BONE LABS:**

**- PECTORAL GIRDLE -**  
**- UPPER LIMB -**

**Dr. Lawrence G. Altman**  
[www.lawrencegaltman.com](http://www.lawrencegaltman.com)  
*Some illustrations are courtesy of McGraw-Hill.*

● = Required  
○ = Not Required



Use this space to record the page numbers from your favorite sources for the bones on this page:

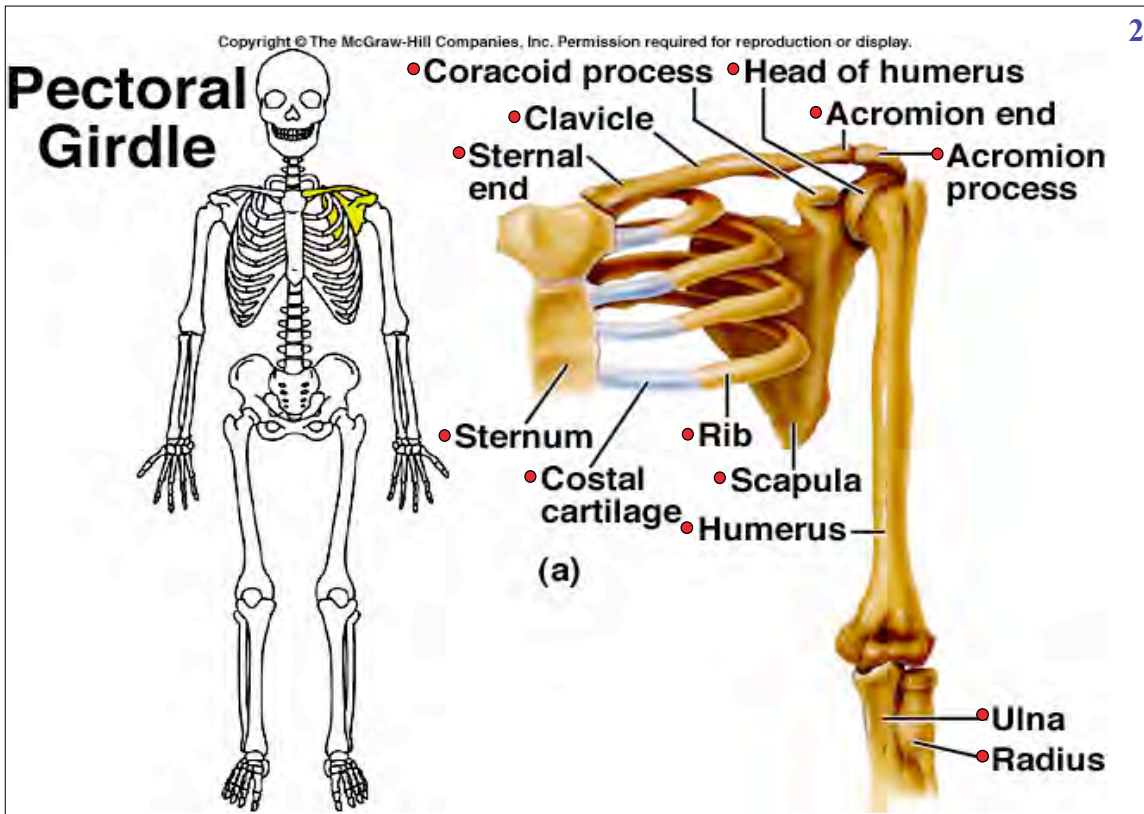
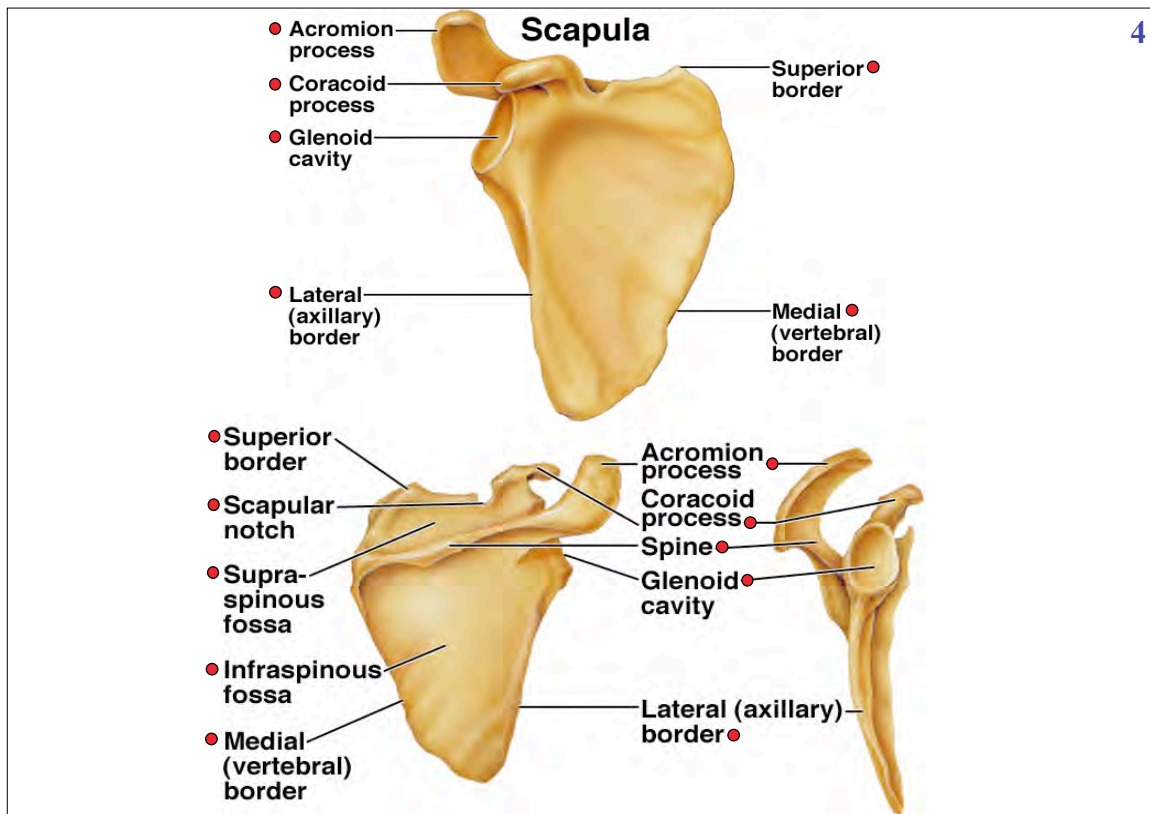
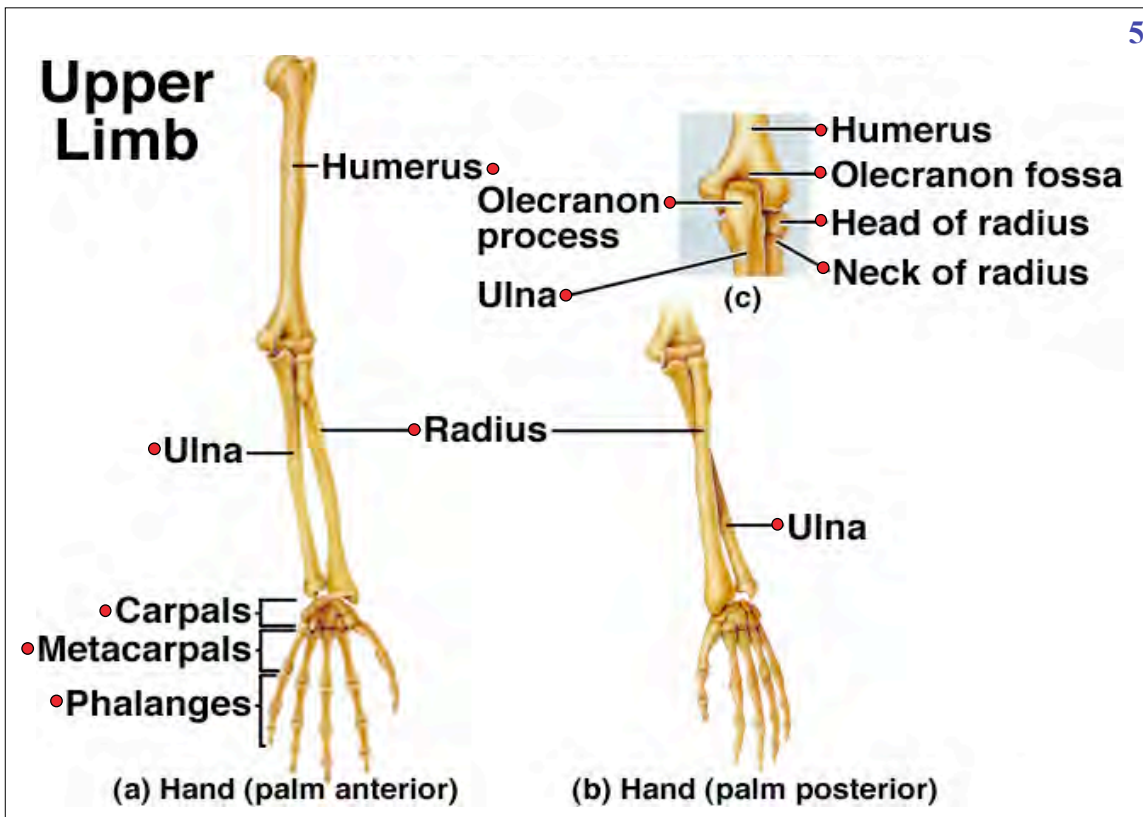


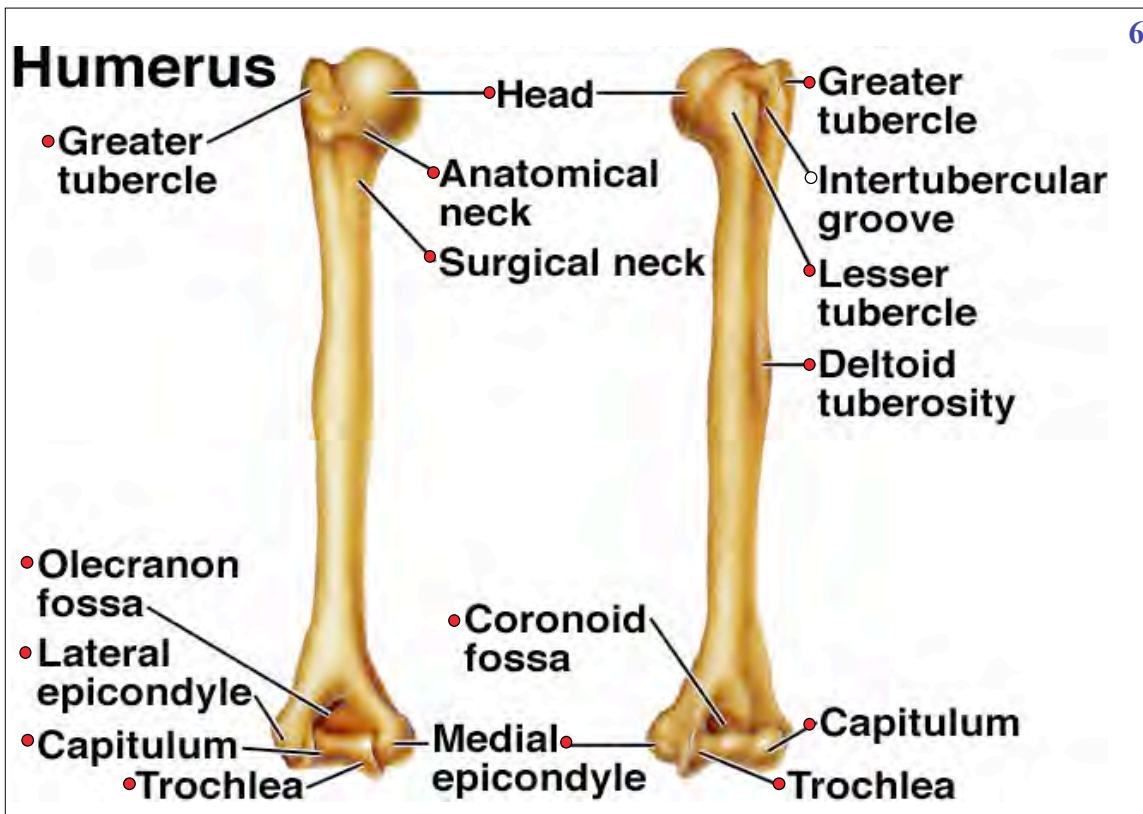
Table 7.10 Bones of Pectoral Girdle and Upper Limbs		
Name and Number	Location	Special Features
Clavicle (2)	● Base of neck between sternum and scapula	Sternal end, acromial end
Scapula (2)	● Upper back, forming part of shoulder	Body, spine, head, acromion process, coracoid process, glenoid cavity
Humerus (2)	● Arm, between scapula and elbow	Head, greater tubercle, lesser tubercle, intertubercular groove, surgical neck, deltoid tuberosity, capitulum, trochlea, medial epicondyle, lateral epicondyle, coronoid fossa, olecranon fossa
Radius (2)	● Lateral side of forearm, between elbow and wrist	Head, radial tuberosity, styloid process, ulnar notch
Ulna (2)	● Medial side of forearm, between elbow and wrist	Trochlear notch, olecranon process, head, styloid process, radial notch
Carpal (16)	● Wrist	Arranged in two rows of four bones each
Metacarpal (10)	● Palm	One in line with each finger
Phalanx (28)	● Finger	Three in each finger; two in each thumb

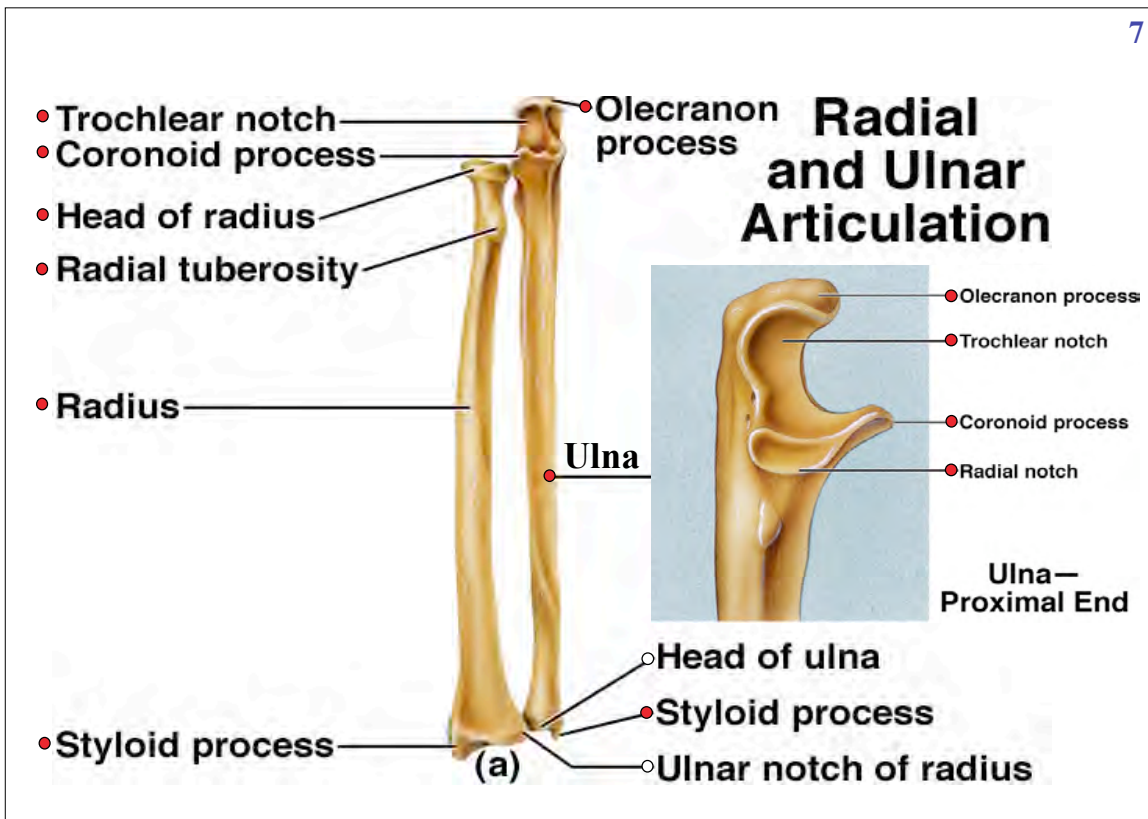
Use this space to record the page numbers from your favorite sources for the bones on this page:





Use this space to record the page numbers from your favorite sources for the bones on this page:





Use this space to record the page numbers from your favorite sources for the bones on this page:

